

KING GEORGE SCHOOL, CALGARY

NATURE GROUNDS

1996-2016

WHAT ARE WE DOING TO HELP THE ENVIRONMENT?

Formerly an asphalt courtyard, the nature grounds now occupies over 1/3 of the area and is used for social and learning opportunities. Complete with mature trees and shrubs; arranged boulders and logs for climbing and imaginative play; archaeology site; butterfly garden; and hand carved seating.



WHERE WE WERE



Atco trailers used by the cadets

<http://781aircadets.ca/psc-docs/PSC%20minutes%2007%20Sep%2005.pdf>





1996 - 1997

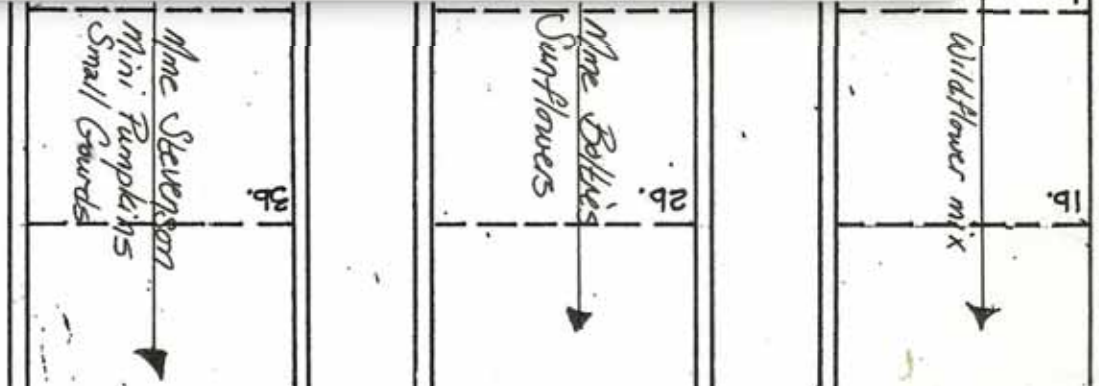
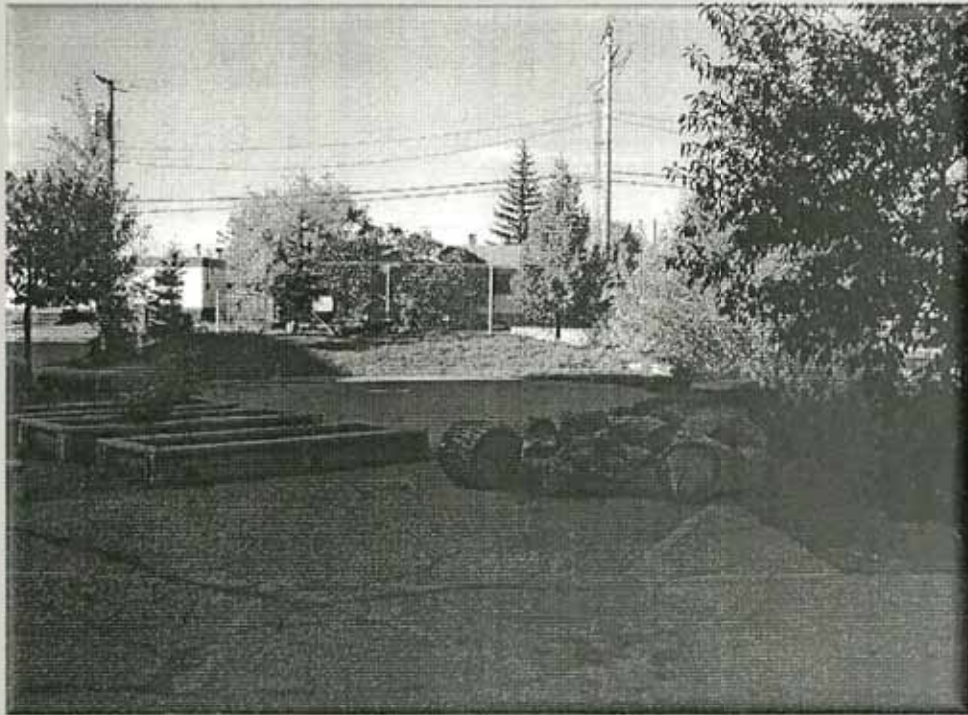
CREATION OF THE LEARNING GROUNDS

Plenty of asphalt needed to
be removed.



1999

Teachers requested to
have a raised garden bed
to use for their class.



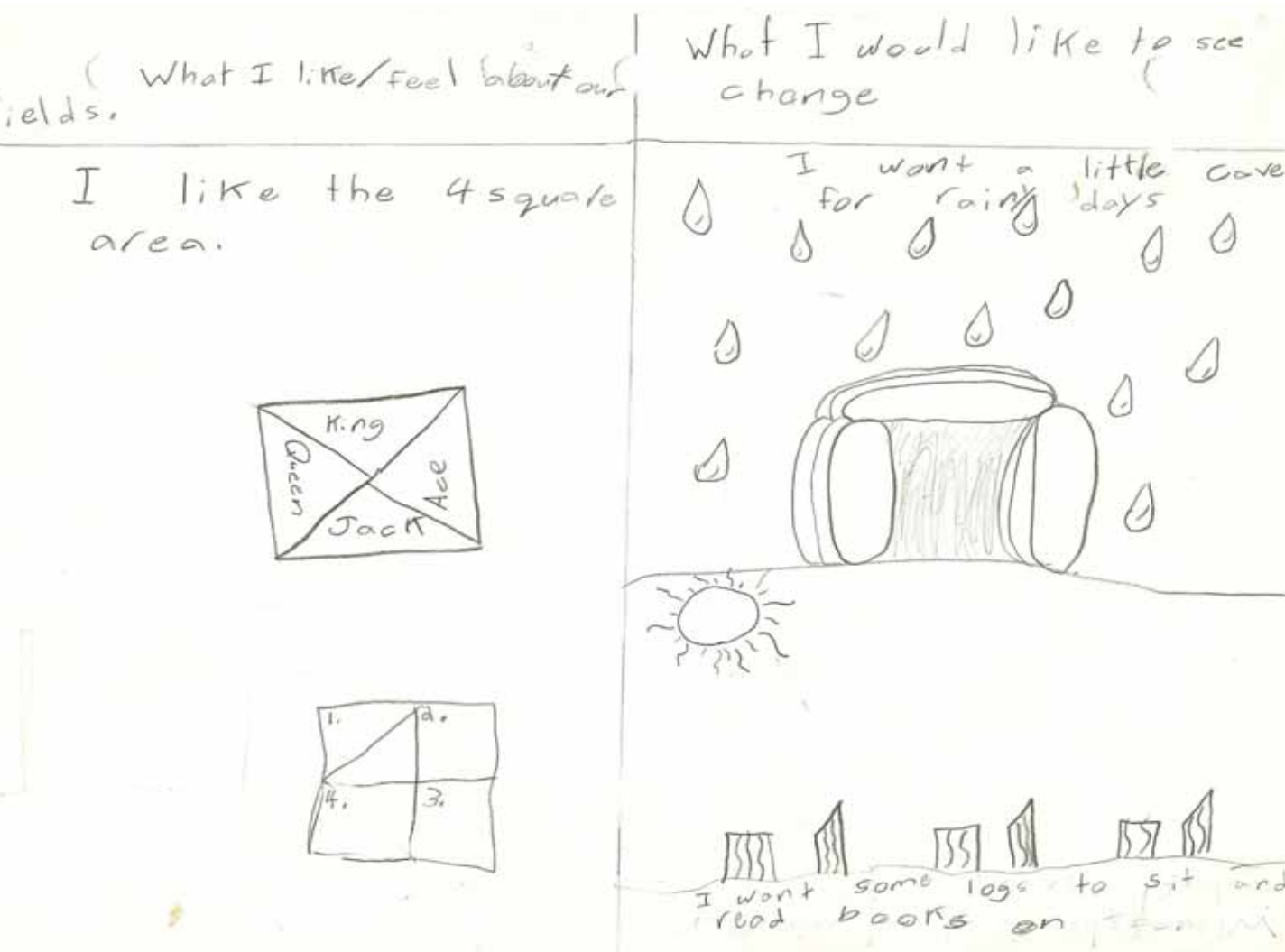


2005-2007

Our school is growing
and changing!

How can we create a
more functional and
beautiful space that
appeals to both the
students and the
teachers?





ASK THEM!

Students were surveyed in 2007. Volunteers went to each classroom to discuss the project with students.

Drawings were also used to further student engagement



ASK THEM!

Students were surveyed in 2007. Volunteers went to each classroom to discuss the project with students.

Drawings were also used to further student engagement



playground
too small
crowded
like swings

hot
empty
more trees & rocks
like small spaces
muddy

ASK THEM!

Students were surveyed
in 2007. Volunteers went
to each classroom to
discuss the project with
students.

Drawings were also used
to further student
engagement



MAKE A PLAN AND ORGANIZE

The Master Plan/2009:
unified play zones & naturalized areas creating a
dynamic recreation space that enriches our children's
play and strengthens our school and local community



The Process up to NOW

- Committee began spring 2005
- Survey of needs and interests of key stakeholders (kids, teachers, staff) (fall 2007) see tri-fold
- CBE, Parks and community consultation (ongoing)
- "Kid testing" a range of playgrounds (Nov - Dec. 08)
- Decisions on key criteria for our playground (Feb.09)
 - see list of criteria on tri-fold.
- Work with 4 potential suppliers on a noncommittal basis (March 09)
- Narrowed to 3 great designs to present to you tonight



IT TAKES A VILLAGE

Removing the
old playground.



IT TAKES A VILLAGE

Climbing rocks
arrive



IT TAKES A VILLAGE

Volunteers, young
and old.



IT TAKES A VILLAGE

Completed on
Sunday evening!



UNDER THE PRAIRIE SKY

Our school vision for
upcoming years sets
the theme for the
naturalization project
and curricular links.

King
George
School
celebrates
100 YEARS

<http://link.brightcove.com/services/player/bcpid2183113682001?bckey=AQ~~AAABPhvTQmE~.OCApyahQOXplWQF0vcCZD6lp10DM8hy-&bctid=2513539217001>



UNDER THE PRAIRIE SKY

Buffalo jump



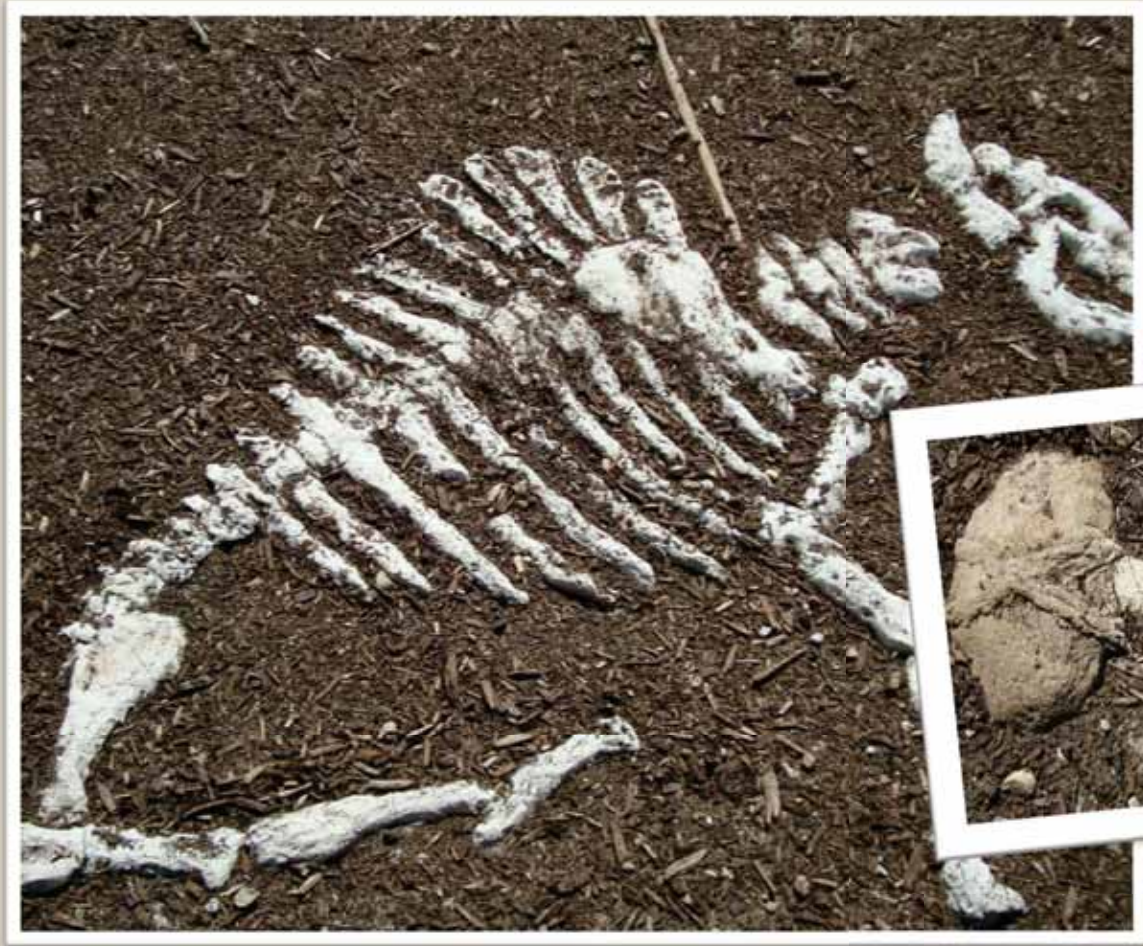
Concrete artist created realistic boulders and bones
<http://www.artisanscapes.ca/about-us/>



UNDER THE PRAIRIE SKY

Archaeology site

Students can jump from boulders onto a thick layer of bark mulch and dig beneath to discover a bison skeleton and examples of tools used by indigenous peoples during hunting seasons.



UNDER THE PRAIRIE SKY

Erratic Trail

A tribute to the glacial forces that shaped our school grounds; boulders were placed along an asphalt walkway to mimic the foothills erratic trail with animal tracks to be painted along the trail weaving in and around our welcome sculpture.



UNDER THE PRAIRIE SKY

Pioneer Picnic Site

Connected to our studies of Alberta's beginnings, a seating area used by classes (and the community) with tables and seating for 24 and flanked by an aspen grove with gooseberry and wild rose bushes that provides shade and wind protection.



UNDER THE PRAIRIE SKY

Aspen Grove



Students researched
native trees of the
region.



UNDER THE PRAIRIE SKY

Centennial
Cottonwoods



To celebrate one
hundred years of
learning, two
commemorative trees
were planted.

See you in the next
100 years.





NEW GROUNDS, NEW OPPORTUNITIES

**Collaborative metal
sculpture**

with Geoff Sandhurst.
Every student hammered
a metal leaf.

Click here to learn more about this project:

[http://schools.cbe.ab.ca/b221/pdfs/natural/Under the Prairie Sky-Sculpture.pdf](http://schools.cbe.ab.ca/b221/pdfs/natural/Under%20the%20Prairie%20Sky-Sculpture.pdf)

Students researched elements of the prairies and chose to represent:

Native spirit, chinook winds, aspen tree, fescue grass, bison, rubbing stone, sulphur chrysalis butterfly, red tailed hawk and weasel.



NEW GROUNDS, NEW OPPORTUNITIES

Geoff Sandhurst

<https://picasaweb.google.com/Sandhurstfamily/UnderThePrairieSkyProgressPublicAlbum#5653100202761326626>



NEW GROUNDS, NEW OPPORTUNITIES

Patience Garden

A small tree nursery developed to hold ten donated Larch saplings until large enough to transplant into our Shelterbelt Weather Station.



NEW GROUNDS, NEW OPPORTUNITIES

Butterfly Garden

Located in our east learning grounds, grade 1/2 classes, researched and designed an area to attract native butterflies.

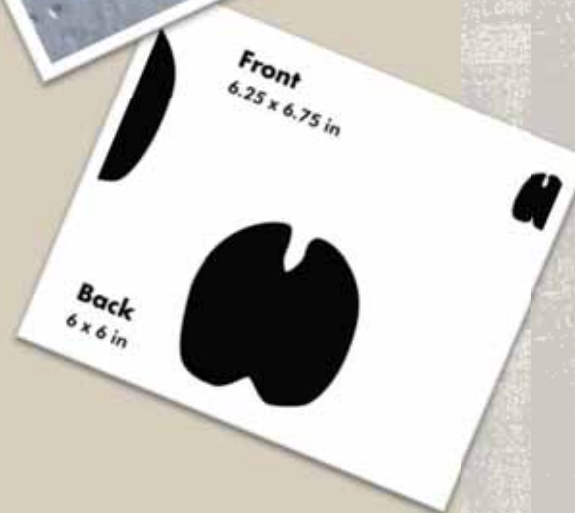


WHAT'S LEFT?

Maintenance

Weeding, composting and
transplanting





WHAT'S LEFT?

Animal Tracks

Imagine animal tracks
telling the story of our
metal sculpture...

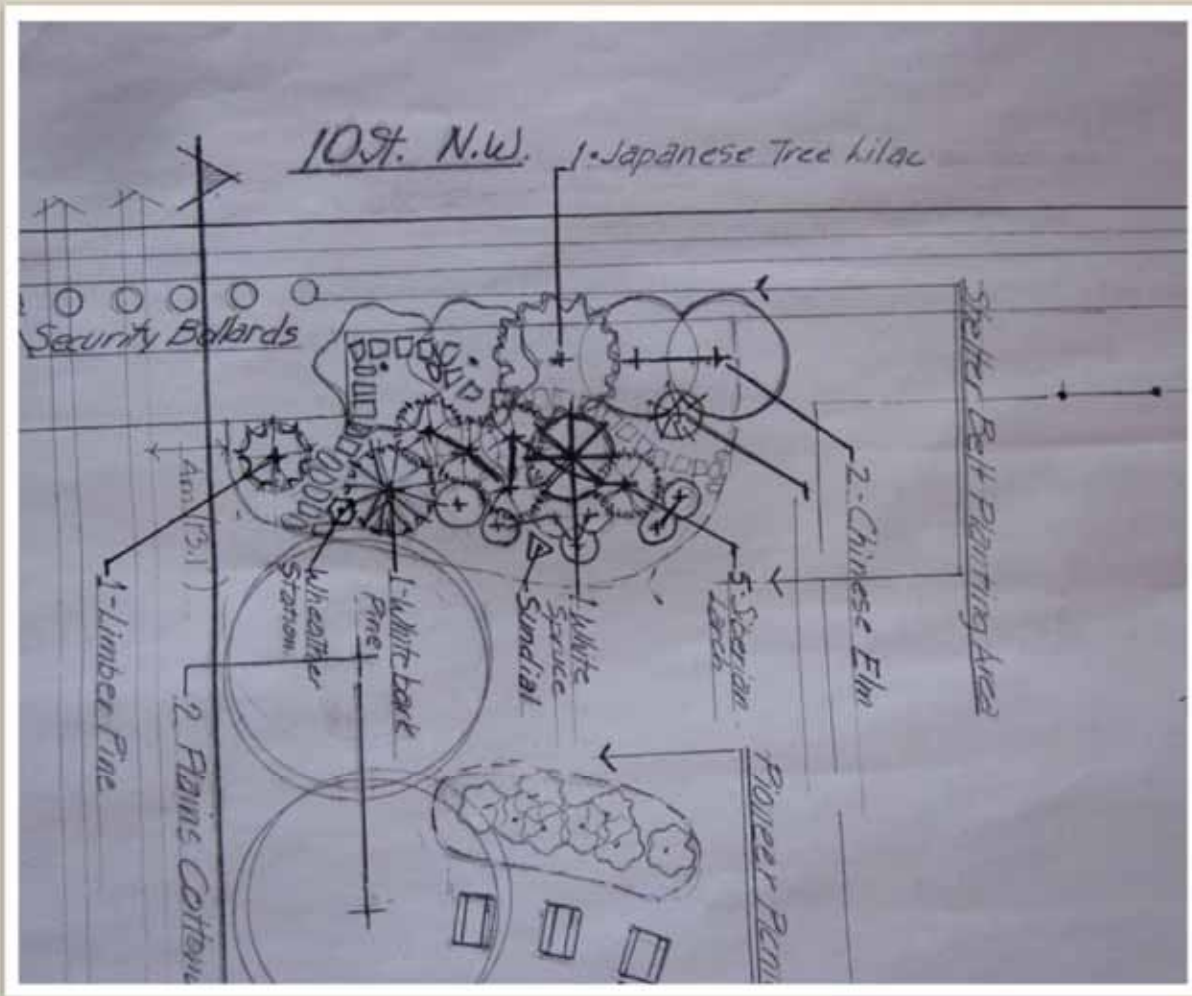


WHAT'S NEXT?

Tipi

Imagine a tipi in our
bison wallow area,
telling the stories of
our natives.





WHAT'S NEXT?

Shelterbelt and Weather Station

Imagine an area where students can study the weather and the impact on our environment.



WHAT'S NEXT?

Transplanting larch trees from Patience Garden to permanent location

Imagine students planning natural areas and taking care of adding to their nature grounds.





PERMACULTURE IS...

working with
nature in creating
a sustainable
natural
ecosystem.





OUR FOOD FOREST

Permaculture is a design system for shelter, energy, waste, water and food production and provides concepts, tools, techniques and strategies that empower individuals to create human environments that are not only sustainable, but regenerative.



One Hundred Years of
Sustainable Living
Under the Prairie Sky



LEARNING CONNECTIONS

Creative Heritage Project

January to June 2014

Read more about this project...

<http://schools.cbe.ab.ca/b221/pdfs/100%20years/Visual%20Art%20Program%20description.pdf>

"Students will collaboratively and collectively design and compose the story of Alberta, it's land and it's people. By creating opportunity for students to ask questions, do action research, and study forms of art, students will engage in making decisions about how to use design and artful thinking to express their understanding of Alberta's Heritage in relation to the land."



POSSIBILITIES

**Innovation and
ideas for the
future**

- Permaculture and food systems
- Chefs and nutritionists
- Active living –yoga, nature play, mental health
- Developing a King George community of volunteers – character development
- Historical significance – the future impact of our nature grounds
- Connection to the community – Mount Pleasant, Confederation Park (2017 opening of time capsule)
- Curriculum links





**WE BELIEVE
IN OUR KIDS,
OUR SCHOOL
AND OUR
COMMUNITY**

**Nurturing a
sense of giving
and belonging**

